

LAHORE:
Office No. 106, 1st Floor, Siddiq Trade Center, 72, Main Boulevard, Gulberg-II,
Lahore. Ph: 042-35817311-14 Fax: 042-35817315

FAISALABAD:
First Floor, Sunrise Plaza, Adjacent to McDonald's, Satiana Road, Faisalabad. Ph:
041-111-111-160

ISLAMABAD:
Roshan Center, 78-West, 1st Floor, Jinnah Avenue, Blue Area, Islamabad.
Ph: 051-2344491-2

KARACHI:
Mezzanine Floor, Topra Plaza, Main University Road, Opp. Urdu Science College,
Gulshan-e-Iqbal, Karachi. Ph: 021-34974674-76

MULTAN:
Mezzanine Floor, ChanOne Tower, Abdali Road, Multan. Ph: 051-4546416-17-18

PESHAWAR:
Deans Trade Center, UG-7 & UG-8, Opposite FC Headquarters, Saddar, Peshawar.
Ph: 091-5250139-40

NOWSHERA:
Office No 1, 1st Floor, City Star Tower, Cloth Market, Opposite District Courts,
Nowshera Cantt. Ph: 0923-611844-46

MARDAN:
Multi Villas, Eastern Bypass, Opposite to Green Acre, Ring Road, Mardan.

HYDERABAD:
Shop No. 10 & 11, Garrison Complex, Main Saddar Road, Near Bombay Bakery,
Hyderabad. Ph: 0222-720151-3

OVERSEAS REPRESENTATIVES

USA & Canada: 001-3472840131, 001-9168012415

London (UK): 0044-7748720534
Birmingham (UK): 0044-7815945945

Denmark & Norway: 0045-31311800
Australia & New Zealand: 0044-7746720534
France: 0033-7-81497798

KSA: 00966-500107913, 00966-564929333,
00966-557070726, 00966-564133141

Dubai: 00971-507508902
Bahrain & Qatar: 00973-33065755

HARBOUR

— FARMHOUSE LIVING BY UNITY —

Marketed by:



111-111-160
starmarketingonline.com



Advertising Consultant:



COME TO HARBOUR
LIVE IN HARMONY





"OVER THE PAST 25 YEARS, UNITY DEVELOPERS HAS REDEFINED THE DYNAMICS OF REAL ESTATE DEVELOPMENT, WHICH NOW SERVES AS A TEMPLATE FOR OTHERS. WE HAVE ALWAYS BELIEVED, TO REACH NEW HORIZONS WE HAVE TO GO BEYOND OUR PERSONAL BOUNDARIES - WE HAVE TO BREAK THE COMFORT ZONE - WE HAVE TO RELENTLESSLY REIMAGINE THE FUTURE TO CHANGE THE WORLD FOR BETTER.

OUR DRIVING FORCE, UNDOUBTEDLY, HAS BEEN THE TRUST YOU PLACED IN US. AT THE SILVER JUBILEE OF UNITY DEVELOPERS, WE WANT TO THANK YOU FOR TRUSTING IN US ALL THESE YEARS.

AND WHAT BETTER WAY TO PASS OUR GRATITUDE THAN TO REIMAGINE THE FUTURE FOR YOU - ONCE AGAIN!

WITH THE LAUNCH OF HARBOUR WE ARE BUILDING A NEW REALITY FOR YOU, A NEW FUTURE FOR YOUR CHILDREN, AND A NEW MODEL OF FARMHOUSE LIVING."

MALIK SHAHID IQBAL
FOUNDER & CEO, UNITY DEVELOPERS





DELIVERING ORGANIC & STRUCTURAL
DEVELOPMENT EXCELLENCE SINCE 1997



GWADAR
THE LARGEST LANDOWNER ON MARINE DRIVE
WITH 1000+ ACRES HARBOUR LAND ON MARINE DRIVE,
UNITY DEVELOPERS IS THE LARGEST LANDOWNER IN
GWADAR WITH COMMERCIAL, RESIDENTIAL AND RESORT
PROJECTS IN THE PIPELINE.

WELCOME TO HARBOUR
THE PLACE WHERE THE NATURE LIVES



"LIVE IN EACH SEASON AS IT PASSES; BREATHE THE AIR, DRINK THE DRINK, TASTE THE FRUIT, AND RESIGN YOURSELF TO THE INFLUENCE OF THE EARTH"

HENRY DAVID THOREAU

"IN NATURE, NOTHING IS PERFECT AND EVERYTHING IS PERFECT. TREES CAN BE CONTORTED, BENT IN WEIRD WAYS, AND THEY'RE STILL BEAUTIFUL"

ALICE WALKER



05-06



THE ONE AND ONLY, HARBOUR

STEP INTO A WORLD WHERE A HOME GOES BEYOND THE WALLS THAT LIBERATE YOU, WHERE ORDINARY MEETS THE EXTRA AND LIVING APPEASES YOUR IMAGINATION. FROM THE VAST EXPANSES OF GREEN SERENITY THAT STRETCH MOST NATURALLY, TO THE SOARING INDULGENCES OF LUXURY LIVING.

SETTLE AT 400,000 SQ M OF LUSH GREEN GATED COMMUNITY TO RENEW, RECONNECT AND REVITALIZE YOUR ASPIRATIONS.

HARBOUR WEAVES THE BEST THAT LIFE HAS TO OFFER INTO ONE DESTINATION.



A COMPREHENSIVE, CONTEMPORARY LIFESTYLE

09-10

WITH UP-TO-DATE AMENITIES AND SERVICES, WHEN IT COMES TO DELIVERING COMFORTS OF A LUXURY COMMUNITY LIVING, HARBOUR PROVIDES YOU A COMPLETE EXPERIENCE.



24-HOUR CCTV SECURITY

RESIDENTS' SAFETY IS A TOP PRIORITY. 24-HOUR CCTV SURVEILLANCE, SECURITY GUARDS AND MONITORED GATES ARE SOME KEY ARRANGEMENTS, MAKING THE HARBOUR LIVING EXPERIENCE PEACEFUL & WORRY-FREE.



RESTAURANT & SUPERMARKET

NURTURE JOYS AMONG THE LOVED ONES AT COMMUNITY EXCLUSIVE DINE-OUT AND SHOPPING AREA. AVAILABILITY OF DAILY USE GROCERIES AND ALL ESSENTIALS WOULD REMAIN AT YOUR DOORSTEP.



400,000 SQ.M OF LUSH GREEN GATED COMMUNITY

HARBOUR IS A WHOLLY GATED COMMUNITY SURROUNDED ON ALL SIDES BY A BOUNDARY WALL WITH DEFINED ENTRY & EXIT POINTS.



RESIDENTS' ONLY CLUB HOUSE

HARBOUR TOGETHERNESS AT THE CLUBHOUSE SERVING AS A HUB FOR ALL LEISURE ACTIVITIES FOR THE RESIDENTS.



CENTRAL MASJID

A MASJID IN THE MIDST OF THE SOCIETY WITH A STUNNING ARCHITECTURE TO GATHER, PRAY, SOCIALIZE AND UNWIND YOUR SOUL.



RESIDENTS' GYM SWIMMING POOL STEAM & SAUNA

A FANTASTIC WELLNESS TREAT INCLUDES SOME OF THE TOP-NOTCH HEALTH & FITNESS FACILITIES WITH A FULLY EQUIPPED AIR-CONDITIONED GYM, SAUNA, STEAM ROOM AND SWIMMING POOL - OPEN TO ALL RESIDENT MEMBERS.





OPP. DHA LAHORE PHASE 10

CHERISH THE EXPERIENCE OF PEACE AND SERENITY FROM THE BUSY LIFESTYLE WHILE STAYING IN A WELL-CONNECTED VICINITY.

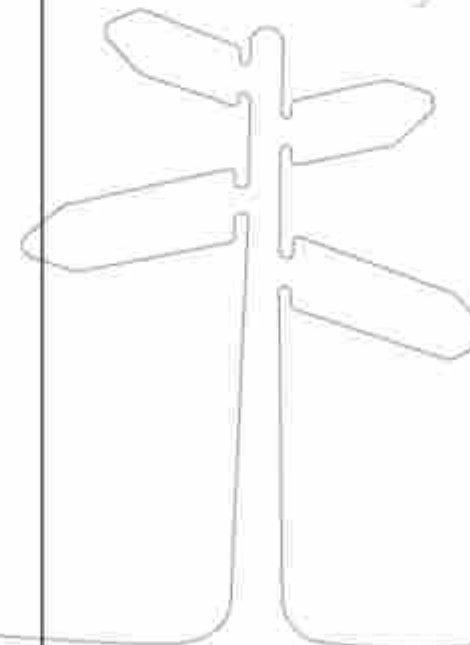
IN CLOSE PROXIMITY TO DHA PHASES AND IDEALLY LOCATED AT LESS THAN A KM FROM MAIN BEDIAN ROAD, HARBOUR BRINGS TO MARKET PREMIUM FARMHOUSES, OFFERING SWIFT CONNECTIONS TO LAHORE RING ROAD AND DHA IN UNDER 20 MINUTES; YET DISCONNECTED FROM THE CITY'S HUSTLE AND BUSTLE.

RECOGNIZING THE VALUE OF A LITTLE PEACE AND QUIET IN A BUSY WORLD, THE CALM SURROUNDINGS AND THE LUSH GREEN OPEN SPACES OFFER YOU A PERFECT ESCAPE FROM URBAN SETTLEMENTS AND MAN-MADE NOISE.

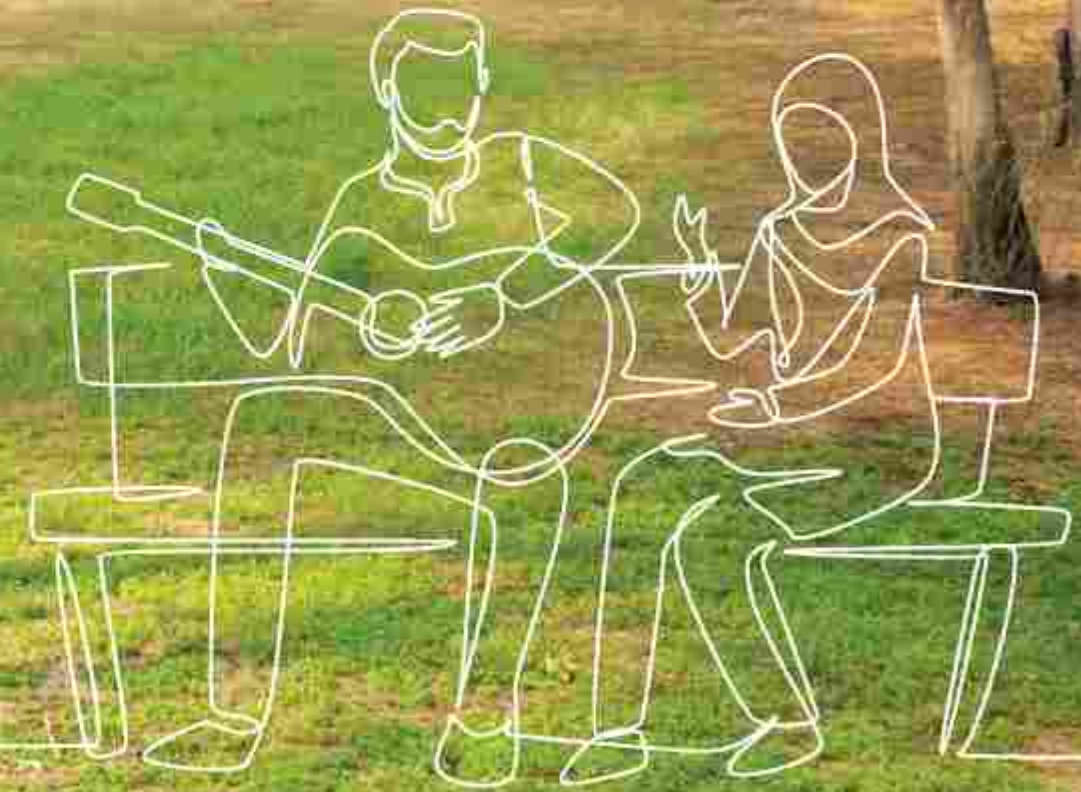
EVERY DAY, YOU FALL IN LOVE WITH THE SOUNDS OF NATURE WHILE EXPERIENCING NOISE-FREE INTERVALS LASTING FOR HOURS.



-----	RANGERS WING HQS	-----	04 KM
-----	RING ROAD	-----	10 KM
-----	DHA PHASE 6	-----	10 KM
-----	AIRPORT	-----	19 KM



SIGNATURE PLOTS IN LAHORE'S MOST PEACEFUL FARMHOUSE LIVING COMMUNITY. SIGNATURE PLOTS ARE SOUGHT AFTER BY AN ELITE SET OF CLIENTS WHO WOULD LIKE TO PLAN, BUILD AND CUSTOMIZE THEIR OWN DREAM FARMHOUSE. DIRECTLY OVERLOOKING EXPANSES OF INFINITE GREEN SERENITY - HARBOUR SIGNATURE PLOTS ARE JUST THE PLACE TO FUEL YOUR IMAGINATION FOR BUILDING YOUR DREAM 'HOME' LIKE NO OTHER!





HARBOUR PHASE I

DREAM YOUR HOME INTO EXISTENCE ON A BESPOKE PLOT OVERLOOKING THE MAGNIFICENT GREEN LANDSCAPE AT HARBOUR. ENVISION INCOMPARABLE LIVING SPACES, CUSTOM-CREATED TO YOUR SPECIFICATIONS IN ONE OF LAHORE'S MOST PEACEFUL AND NATURAL LIVING COMMUNITIES. CRAFT EVERYTHING DOWN TO THE FINEST DETAIL, ON IDEALLY LOCATED 4 TO 12 KANAL SIGNATURE PLOTS.

THE MASTER PLAN HAS BEEN PRECISELY DESIGNED TO PROVIDE CONTEMPORARY LIVING IN HARMONY WITH SURROUNDINGS. THE INFRASTRUCTURE IS GETTING COMPLETED ON A FAST PACE WITH ALL THE BASIC FACILITIES & AMENITIES. YOU CAN START BUILDING YOUR FARMHOUSE RIGHT AWAY.

CRAFT EVERYTHING DOWN
TO THE FINEST DETAIL

15-16

HEAR THE STARS

17-18

TOUCH THE STARS EACH NIGHT, REENERGIZE EVERY MOMENT OF LIVING. HARBOUR'S SCENIC SECLUDED LOCATION LET YOU FLEE THE OUTSIDE WORLD IN ELEGANCE WITH A FINE BALANCE BETWEEN INDOOR AND OUTDOOR LIFE.



HARBOURBYUNITY.COM

HARBOUR

TEAM@HARBOURBYUNITY.COM



BE IN HARMONY WITH YOURSELF
AND WITH YOUR FUTURE.
OWNING A SIGNATURE FARMHOUSE PLOT AT
HARBOUR IS NOT JUST A PERFECT
INVESTMENT MOVE YOU MAKE FOR YOURSELF,
YOUR DREAMS AND YOUR FAMILY BUT IT
REMAINS HIGHLY PROFITABLE, YIELDING
LUCRATIVE FUTURE RETURNS.



HARBOURBYUNITY.COM

HARBOUR

TEAM@HARBOURBYUNITY.COM

HARBOUR PROSPERITY

19-20

PEACE FOR OVERSEAS

21-22



HARBOURBYUNITY.COM

HARBOUR

TEAM@HARBOURBYUNITY.COM



EMPOWER YOUR DREAMS AT HARBOUR FROM ABROAD. EXCLUSIVELY DESIGNED FOR NON-RESIDENT PAKISTANI NATIONALS OWNING A ROSHAN DIGITAL ACCOUNT - PEACE FOR OVERSEAS SCHEME OFFERS HARBOUR SIGNATURE 4 TO 12 KANAL PLOTS OVER A CONVENIENT INTEREST-FREE INSTALLMENT PLAN.

20% PAYMENT AT THE TIME OF BOOKING

20% PAYMENT AFTER 3 MONTHS

20% PAYMENT IN AFTER 6 MONTHS

40% PAYMENT AFTER 8 MONTHS (OR AT THE TIME OF POSSESSION)